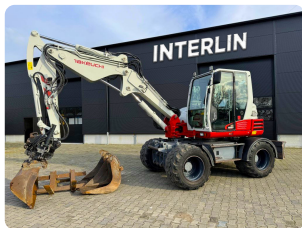


INTERLIN PRODUCT SHEET

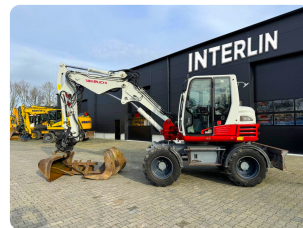
Takeuchi TB295W DKS

Price: 27000 \$

Rental Cost: 1500 \$ / Per Month



Product Image



Product Image

Product Image

Category	Details
Stock Number	0021J
Brand	Takeuchi
Model	TB295W DKS
Year	2014
Operating Hours	12,639 hours
Type	Wheeled Excavator
Engine	Deutz 4-cylinder Diesel
Power Output	100 hp (74.9 kW)
Fuel Type	Diesel
Operating Weight	9,500 kg
Max Digging Depth	4.10 m
Max Reach	7.8 m
Bucket Capacity	0.25 – 0.35 m ³
Hydraulic System	Load-sensing, variable displacement pump
Hydraulic Flow	160 l/min
Hydraulic Pressure	280 bar
Transmission	Hydrostatic
Max Speed	30 km/h
Drive System	4WD
Steering Modes	2WS, 4WS, Crab
Brakes	Multi-disc, oil-immersed
Tires	8.25-20

Category**Cabin****Attachments**

DetailsEnclosed with HVAC system,
ROPS/FOPS certifiedStandard bucket, hydraulic quick
coupler, optional tiltrotator